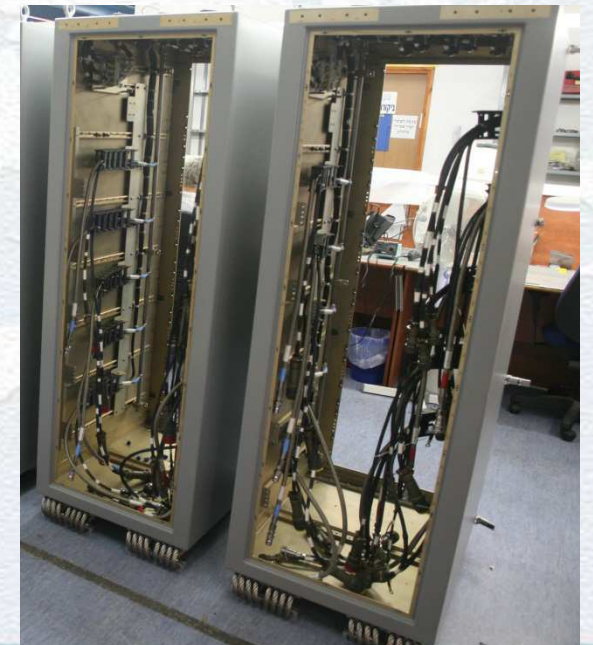


Cable Assemblies & Wire Harnesses (Capabilities)

- Cable assemblies for carrying:
 - High Voltage
 - High Current
 - High Density
 - RF: from 2 MHz – 18 GHz
 - Data: Electrical and Optical
- Wire Harness
 - Wire to Wire
 - Wire to Board
 - Wire to Device
- Workmanship Standards: **IPC-WHMA-A620A**
- Quality Management Standard: **AS 9100B**
- PEL undertakes manufacturing of cable assemblies and wire harnesses on Built to Print as well as Built to Specs basis



Cable Assemblies & Wire Harnesses (Testing)

Our rigorous testing setup ensures highest Quality

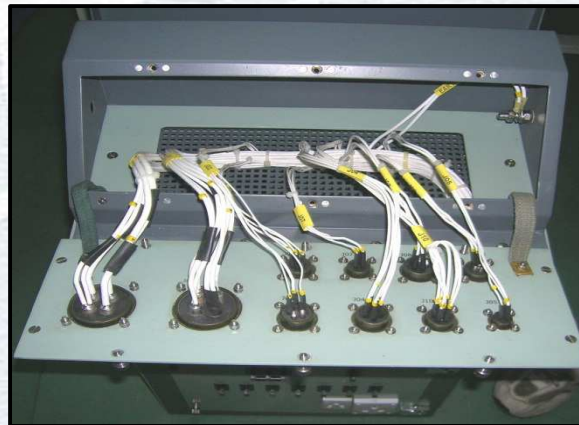
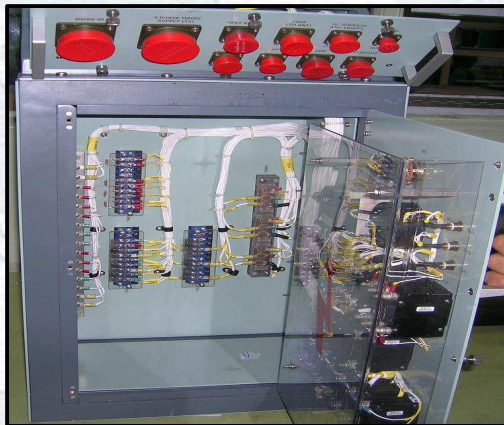
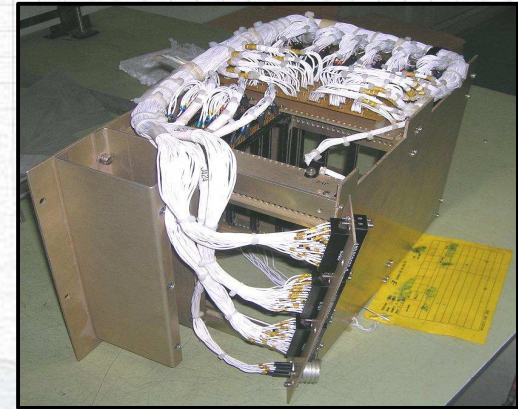
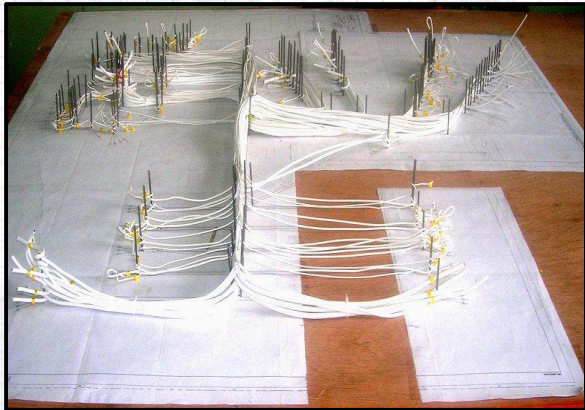
- YP-30H Hi Pot Tester 1500V,600 Points
- Crimp Pull Tester PT150B – DMC
- Network Analyzer
- Continuity Test
- Breakdown Voltage Test
- Insulation Resistance and Dielectric Test
- Waterproof Test For Outdoor Cables
- Environmental Test
- Vibration and Bump Test
- Magnifiers
- Light Intensity Meter
- Humidity Meter



Cable Assemblies & Wire Harnesses (GDT)



Cable Assemblies & Wire Harnesses (BEL)



Cable Assemblies & Wire Harnesses (ADT)



Heron UAV